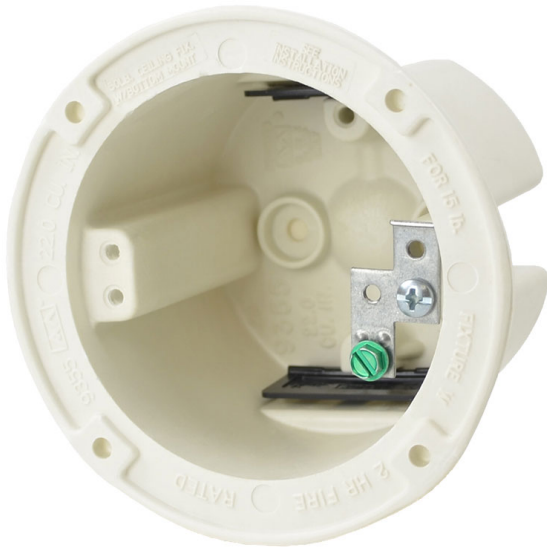




**ALLIED
MOULDED
PRODUCTS, Inc.**

**419-636-4217
222 N. Union St.
Bryan, OH 43506**



Product Info

Brand: fiberglassBOX

UPC: 85339680918

UNSPSC: 39121316

Carton Weight: 20 lbs

Carton Length: 20 in

Carton Width: 17 in

Carton Height: 11 in

Country of Origin: United States of America

Color: Off white

Material: Fiberglass reinforced polyester

Additional Materials: Galvanized ground strap with plated carbon steel fastener and green plated carbon steel ground screw, Polyvinyl chloride clamps

Box Diameter: 3.5

9355-GK

3.5" dia. round fixture support box for use with nonmetallic sheathed cable *Replacement for 9355-G*

Carton Quantity: 48

Mounting Description: Bottom mount button holes or flange holes

Box Type: Ceiling - Fixture

Box Features: Grounding strap, Speed "K" nonmetallic clamps

Installation Type: Old Work

Width: 3-1/2 in

Depth: 2-3/4 in

Volume: 22 cu in

Fixture Rating: 50lbs

Features:

Machine tapped fixture holes, ground strap, round exterior for easy cut-in, rigid hard box construction, no distortion with high temperatures, shatter resistant with low temperatures, Speed "K" Clamps factory installed

Application:

Old work residential construction 2 HR fire resistive walls (15 lbs fixture support - flange mount) and ceilings (50 lbs. fixture support - bottom mounted)

Box Diameter: 3.5

Standards:

ANSI / UL 514C: [File No. E30594](#)



LISTED

Fire Classification:

Fire Test of Building Construction Materials

ANSI / UL 263: [File No. CEYY.R9379](#) (Category / File No.)

Note: Products must also be certified to: ANSI / UL 514C

Fire Resistance Classification in Wall Assemblies 2-Hours or less

Shall be separated by a horizontal distance of not less than 3 inches

Fire Resistance Classification in Floor-Ceiling Assemblies 2-Hours or Less

Distance between boxes in adjacent cavities may be reduced to 5 1/2 inches

Note: For more details please refer to the UL fire resistive directory and Allied Moulded's CEYY.9379 (Outlet boxes and fittings classified for fire resistance)
