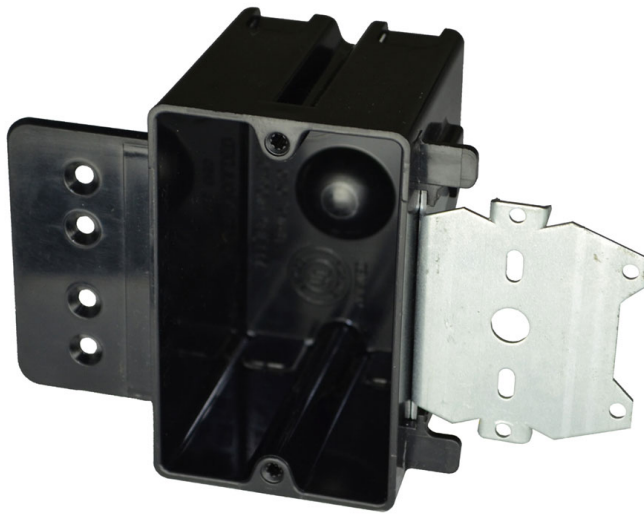




ALLIED
MOULDED
PRODUCTS, Inc.

419-636-4217
222 N. Union St.
Bryan, OH 43506



P-181HZ

Single gang electrical box for use with nonmetallic sheathed cable

Carton Quantity: 36

Closure Type:

Mounting Description: Stud face mount both sides with molded-in hanger bracket and steel "Z" bracket with 1/2" offset

Box Type: Wall - Switch/Receptacle

Box Features: "HL" hanger, "Z" hanger(s)

Installation Type: New Work

Height: 3-3/4 in

Width: 2-5/16 in

Depth: 2-3/4 in

Volume: 18 cu in

Number of Gangs: 1

Product Info

Brand: flexBOX

UPC: 85339249191

UNSPSC: 39121308

Carton Weight: 11 lbs

Country of Origin: United States of America

Color: Black

Material: Polyvinyl Chloride

Additional Materials: Galvanized snap in bracket

Features:

Molded-in splined device holes, leveling ribs

Application:

New work residential construction 2 HR fire resistive walls & ceilings

Standards:

ANSI / UL 514C: [File No. E30594](#)



LISTED

Fire Classification:

Fire Test of Building Construction Materials
ANSI / UL 263: [File No. CEYY.R9379](#) (Category / File No.)

Note: Products must also be certified to: ANSI / UL 514C

Fire Resistance Classification in Wall Assemblies 2-Hours or less

Shall be separated by a horizontal distance of not less than 24 inches

Fire Resistance Classification in Floor-Ceiling Assemblies 2-Hours or Less

Distance between boxes must be 4-½ feet from one another

Note: For more details please refer to the UL fire resistive directory and Allied Moulded's CEYY.9379 (Outlet boxes and fittings classified for fire resistance)