

# Floor Box Product Catalog

FLOOR BOX ASSEMBLIES AND ACCESSORIES FOR  
RESIDENTIAL & COMMERCIAL CONSTRUCTION

\*ROUGH-IN / TRIM-OUT KITS AVAILABLE NOW



**ALLIED  
MOULDED  
PRODUCTS, Inc.**



## Rough-In / Trim-Out Kits

Allied Moulded's series of floor box assemblies are now available in rough-in and trim-out configurations. Rough-in kits feature rectangular or round box profiles, and can be paired with a variety of cover options including; brass, dark bronze, or nickel-plated finishes.

Floor box assemblies can be used in residential or commercial construction and with many different flooring applications including carpet, ceramic tile, and laminate or wood flooring. Low voltage options are available in specific models with the use of industry standard keystone plugins.

### Features & Benefits

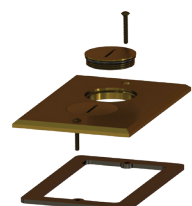
- Rough-in and trim-out kits packaged separately for added flexibility and customization
- Available cover finishes: brushed brass, dark bronze, or nickel-plated brass
- Duplex, and decorative style devices are available (specific devices vary by model)
- Low voltage (LV) models provided with industry standard keystone openings



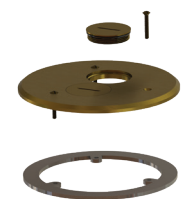
FB-4RI

Catalog Number	Cu. In Volume	Box Profile	Device	LV Provision	UPC# 85339	Std. Pkg. Qty.	Std. Wt. (lb.)
FB-2RI	24.5	Rectangle	Duplex	No	98459	6	4
FB-3RI	24.5	Round	Duplex	No	98460	6	4
FB-4RI	19.5	Round	Duplex/LV	Yes	98461	6	4
FB-6RI	24.5	Rectangle	Decorative	No	98462	6	4

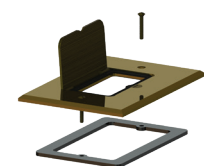
*Note: Rough-in kits include; floor box, dust plate, mounting screws, and device. Low voltage keystones plugins sold separately. Choose from a variety of trim-out cover finish options to complete the box assembly.*



FB-2RI



FB-3RI

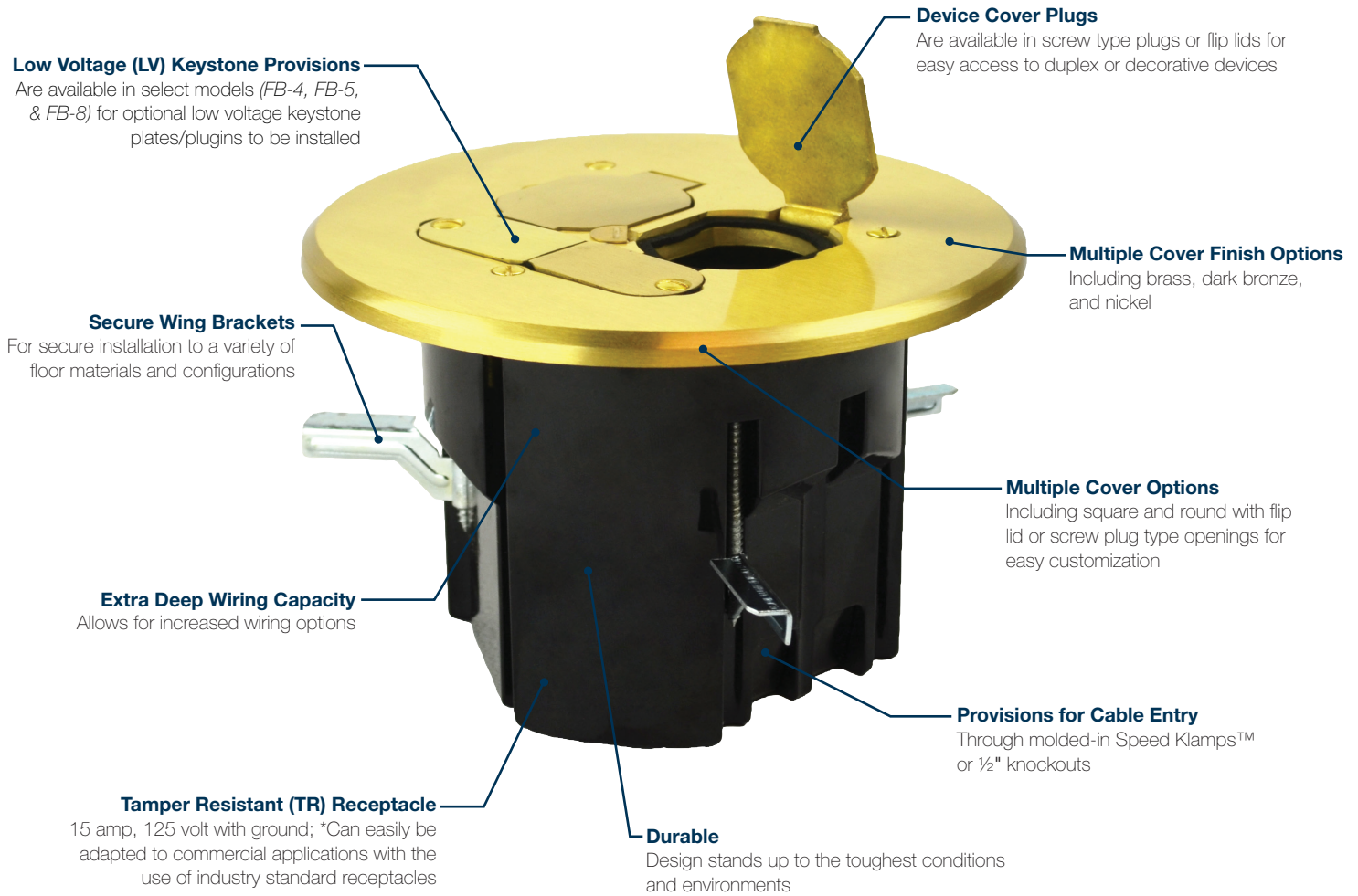


FB-6RI

Catalog Number	Cover Finish	Cover Type	Box Profile	UPC# 85339	Std. Pkg Qty.	Std. Wt. (lb.)
FB-2CVR	Brass	Screw Plug	Rectangle	94133	1	1
FB-2DBCVR	Dark Bronze	Screw Plug	Rectangle	99602	1	1
FB-2NCVR	Nickel	Screw Plug	Rectangle	94134	1	1
FB-3CVR	Brass	Screw Plug	Round	94135	1	1
FB-3DBCVR	Dark Bronze	Screw Plug	Round	99604	1	1
FB-3NCVR	Nickel	Screw Plug	Round	94136	1	1
FB-4CVR	Brass	Screw Plug	Round	99078	1	1
FB-4DBCVR	Dark Bronze	Screw Plug	Round	99079	1	1
FB-4NCVR	Nickel	Screw Plug	Round	99080	1	1
FB-6CVR	Brass	Flip Lid	Rectangle	97242	1	1
FB-6DBCVR	Dark Bronze	Flip Lid	Rectangle	97244	1	1
FB-6NCVR	Nickel	Flip Lid	Rectangle	97243	1	1

*Note: Trim-out kits include; cover, screws, gasket, and installation instructions. For added customization, mix and match multiple cover finish options with each rough-in kit.*





## Low Voltage Keystone Openings Available

Low voltage keystone openings are available for use with select models (FB-4, FB-5, & FB-8). Keystone can be installed from industry standard LV keystone plugs. Different part numbers provide various LV plugin configurations. **NOTE: Keystone plugins are not included in retail packaging.**



## SLIDERBOX® Adjustable Floor Box

The SLIDERBOX® floor box, designed with our patented SLIDERBOX® feature, allows for easy adjustments and easier installation of flooring materials. There's no need to remove or relocate the mounting screws to reposition the box up or down. **\*Max substrate – 2"**



## Device Options

We give you the option to choose your device. Floor box options include simplex, duplex, or decorative style devices for single, round, and two gang boxes! **NOTE: Device options vary depending on the model chosen.**



**\*Note: Additional floor box models may have features and benefits unlisted here.**

# Single Gang Floor Box Assemblies

## Features & Benefits

- Optional cover material types: brushed brass, dark bronze, or nickel
- Cover plug screws and flip lids seals are water tight and allow assembly to meet UL 514C scrub-water exclusion test
- TR Tamper Resistant receptacle; 15 amp, 125 volt with ground (NEMA config. 5-15R). *Note: Can easily be adapted to commercial applications with the use of industry standard receptacles*
- Extra deep wiring capacity at 24.5 (24-SBFB) cubic inches
- UL® listed in accordance with the requirements for floor boxes in Article 314.27 of the NEC
- Provisions for cable entry through molded-in Speed Klamps™ or ½" knockouts
- Simplex, duplex, and decorative style devices are available (specific devices may vary between models)
- Steel wing brackets (FB-1, FB-2, FB-6 models); Galvanized steel screw (SBFB models) for secure installation
- Basic rectangular exterior profile in all single gang boxes for quick and easy cut-in installation



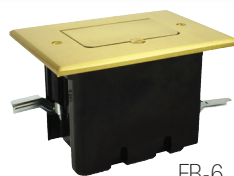
## Single Gang Product Line



FB-1N



FB-2DB



FB-6

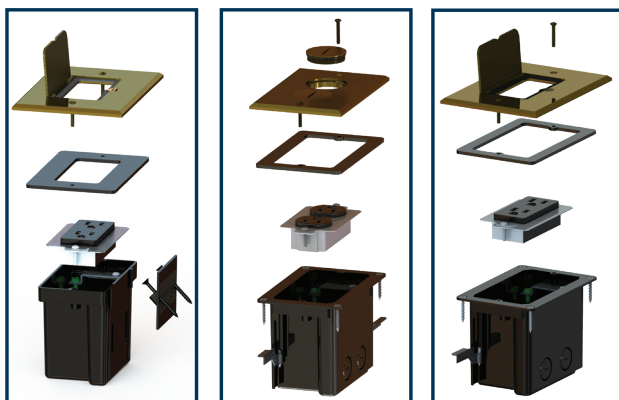


SBFB-1N

Cu. In Volume	Catalog Number	Cover Finish	Cover Type	Device	LV Provision	UPC# 85339	Std. Pkg. Qty.	Std. Wt. (lb.)
24.5	FB-1	Brass	Screw Plug	Simplex	No	94123	6	9
24.5	FB-1N	Nickel	Screw Plug	Simplex	No	94128	6	9
24.5	FB-2	Brass	Screw Plug	Duplex	No	94124	6	9
24.5	FB-2DB	Dark Bronze	Screw Plug	Duplex	No	99601	6	9
24.5	FB-2N	Nickel	Screw Plug	Duplex	No	94129	6	9
24.5	FB-6	Brass	Flip Lid	Decorative	No	97233	6	10
24.5	FB-6DB	Dark Bronze	Flip Lid	Decorative	No	97235	6	10
24.5	FB-6N	Nickel	Flip Lid	Decorative	No	97234	6	10
24.0	SBFB-1	Brass	Flip Lid	Decorative	No	97528	6	10
24.0	SBFB-1DB	Dark Bronze	Flip Lid	Decorative	No	97529	6	10
24.0	SBFB-1N	Nickel	Flip Lid	Decorative	No	97530	6	10



## Specifications: Single Gang



SBFB-1

FB-2

FB-6

- Cut-in hole size: 2.625" x 4.437"
- Box size (no flange): 3.5" (D) x 2.498" (W) x 4.312" (H) (SBFB H=4.4")
- Flange outside dimension: 3.250" x 4.883" (SBFB—no flange)
- Cover dimension (FB-1/FB-2): 0.217" (D) x 3.5" (W) x 5.125" (H)
- Cover dimension (SBFB-1/FB-6): 0.222" (D) x 4" (W) x 5.625" (H)
- Box wire capacity: 24.5 cu. in. (SBFB 24.0 cu. in.)
- (2) ½" knockouts on bottom and (2) ½" knockouts on the side wall
- (2) molded-in Speed Klamps™ for securing NM cable
- Part material types:
  - Cover: brushed brass, nickel, or dark bronze
  - Screw plug/Flip Lid: matches cover with nitrile O-ring or gasket
  - Gasket: closed-cell rubber
  - Box screws and wings: galvanized steel
  - Dust plate: galvanized steel
  - Device: UL® listed residential grade w/ copper terminals & brass ground
- Receptacle rating: 15 amp, 125V tamper resistant with ground (Article 406 of the NEC; requirements for Tamper Resistant receptacles in dwellings)
- Assembly meets UL 514C scrub-water exclusion test requirement

\*All dimensions are in inches.

## Replacement Part Kits



FB-1NCVR



FB-2CVR



SBFB-1DBCVR



FB-BRPLG

Catalog Number	Used With	Cover Finish	Cover Type	Device	LV Provision	UPC# 85339	Std. Pkg Qty.	Std. Wt. (lb.)
FB-1CVR	FB-1	Brass	Screw Plug	Simplex	No	94131	1	1
FB-1NCVR	FB-1N	Nickel	Screw Plug	Simplex	No	94132	1	1
FB-2CVR	FB-2	Brass	Screw Plug	Duplex	No	94133	1	1
FB-2DBCVR	FB-2DB	Dark Bronze	Screw Plug	Duplex	No	99602	1	1
FB-2NCVR	FB-2N	Nickel	Screw Plug	Duplex	No	94134	1	1
FB-6CVR	FB-6	Brass	Flip Lid	Decorative	No	97242	1	1
FB-6DBCVR	FB-6DB	Dark Bronze	Flip Lid	Decorative	No	97244	1	1
FB-6NCVR	FB-6N	Nickel	Flip Lid	Decorative	No	97243	1	1
FB-BRPLG	FB-1,FB-2	Brass	Screw Plug	Simplex, Duplex	No	94137	1	1
FB-DBPLG	FB-2DB	Dark Bronze	Screw Plug	Simplex	No	99605	1	1
FB-NPLG	FB-1N, FB-2N	Nickel	Screw Plug	Simplex, Duplex	No	94138	1	1
SBFB-1CVR	SBFB-1	Brass	Flip Lid	Decorative	No	97617	1	1
SBFB-1DBCVR	SBFB-1DB	Dark Bronze	Flip Lid	Decorative	No	97619	1	1
SBFB-1NCVR	SBFB-1N	Nickel	Flip Lid	Decorative	No	97618	1	1

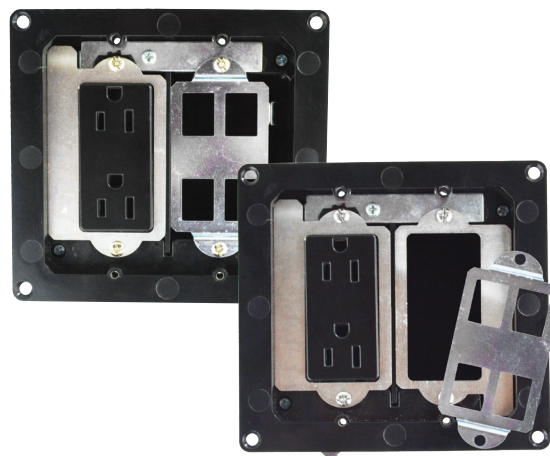


**WARNING:** This product can expose you to chemicals including lead, which is known to the State of California to cause cancer and birth defects or other reproductive harm. For more information go to [www.P65Warnings.ca.gov](http://www.P65Warnings.ca.gov).

# Two Gang Floor Box Assemblies

## Features & Benefits

- Optional cover material types: brushed brass, dark bronze, or nickel
- Includes additional dust plate for easy customization
- Low voltage (LV) openings available for industry standard keystone plugs to be installed
- Flip lids seal water tight and allow assembly to meet UL 514C scrub-water exclusion test
- TR Tamper Resistant receptacle; 15 amp, 125 volt with ground (NEMA config. 5-15R). Note: Can easily be adapted to commercial applications with the use of industry standard receptacles
- Extra deep wiring capacity at 44.5 cubic inches
- UL® listed in accordance with the requirements for floor boxes in Article 314.27 of the NEC
- Provisions for cable entry through molded-in Speed Klamps™ or ½" knockouts
- Steel wing brackets for secure installation
- Basic square exterior profile for quick and easy cut-in installation



FB-5 models include additional dust plate for customization of floor box assembly. The plates are easily interchangeable with no additional accessories required for installation!

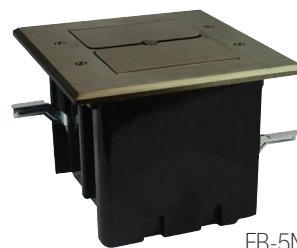
## Two Gang Product Line



FB-5



FB-5DB



FB-5N

Cu. In Volume	Catalog Number	Cover Finish	Cover Type	Device	LV Provision	UPC# 85339	Std. Pkg. Qty.	Std. Wt. (lb.)
44.5	FB-5	Brass	Flip Lid	Decorative/LV	Yes	99075	6	14
44.5	FB-5DB	Dark Bronze	Flip Lid	Decorative/LV	Yes	99076	6	14
44.5	FB-5N	Nickel	Flip Lid	Decorative/LV	Yes	99077	6	14

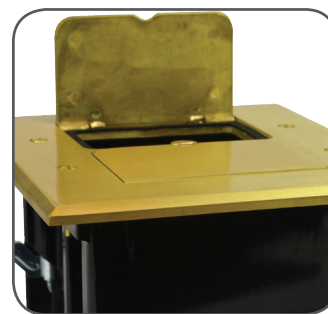
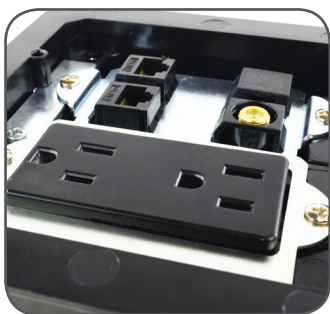


## Specifications: Two Gang



FB-5

- Cut-in hole size: 4.625" x 4.437"
- Box size (no flange): 4.056" (D) x 4.498" (W) x 4.335" (H)
- Flange outside dimension: 5.508" x 5.133"
- Cover dimension: .222" (D) x 6.000" (W) x 5.625" (H)
- (4) Dust plate keystone openings(FB-5): .575" x .765"
- Box wire capacity: 44.5 cu. in.
- (2) ½" knockouts on bottom
- (4) molded-in Speed Klamps™ for securing NM cable
- Part material types:
  - Cover: brushed brass, nickel, or dark bronze
  - Flip Lids: matches cover
  - Gaskets: closed-cell rubber
  - Box screws and wings: galvanized steel
  - Dust plates: galvanized steel
  - Device: UL listed residential grade w/ copper terminals & brass ground
- Receptacle rating: 15 amp, 125V tamper resistant with ground (Article 406 of the NEC; requirements for Tamper Resistant receptacles in dwellings)
- Assembly meets UL 514C scrub-water exclusion test requirement



\*All dimensions are in inches.

## Replacement Part Kits



FB-5CVR



FB-5DBCVR



FB-5NCVR

Catalog Number	Used With	Cover Finish	Cover Type	Device	LV Provision	UPC# 85339	Std. Pkg. Qty.	Std. Wt. (lb.)
FB-5CVR	FB-5	Brass	Flip Lid	Decorative	Yes	99081	1	1
FB-5-DBCVR	FB-5DB	Dark Bronze	Flip Lid	Decorative	Yes	99082	1	1
FB-5NCVR	FB-5N	Nickel	Flip Lid	Decorative	Yes	99083	1	1



**WARNING:** This product can expose you to chemicals including lead, which is known to the State of California to cause cancer and birth defects or other reproductive harm. For more information go to [www.P65Warnings.ca.gov](http://www.P65Warnings.ca.gov).

# Round Floor Box Assemblies

## Features & Benefits

- Optional cover material types: brushed brass, dark bronze, or nickel
- Cover plug screws and flip lids seal water tight and allow assembly to meet UL 514C scrub-water exclusion test
- TR Tamper Resistant receptacle; 15 amp, 125 volt with ground (NEMA config. 5-15R). Note: Can easily be adapted to commercial applications with the use of industry standard receptacles
- Low voltage (LV) openings available for industry standard keystone plugs to be installed
- Extra deep wiring capacity at 19.5 and 24.5 cubic inches
- UL® listed in accordance with the requirements for floor boxes in Article 314.27 of the NEC
- Provisions for cable entry through molded-in Speed Klamps™ or ½" knockouts
- Steel wing brackets for secure installation
- Basic round exterior profile for quick and easy cut-in installation



## Round Box Product Line



FB-3DB



FB-4



FB-7N



FB-8DB

Cu. In Volume	Catalog Number	Cover Finish	Cover Type	Device	LV Provision	UPC# 85339	Std. Pkg. Qty.	Std. Wt. (lb.)
24.5	FB-3	Brass	Screw Plug	Duplex	No	94125	6	10
24.5	FB-3DB	Dark Bronze	Screw Plug	Duplex	No	99603	6	10
24.5	FB-3N	Nickel	Screw Plug	Duplex	No	94130	6	10
19.5	FB-4	Brass	Screw Plug	Duplex/LV	Yes	99072	6	12
19.5	FB-4DB	Dark Bronze	Screw Plug	Duplex/LV	Yes	99073	6	12
19.5	FB-4N	Nickel	Screw Plug	Duplex/LV	Yes	99074	6	12
24.5	FB-7	Brass	Flip Lid	Duplex	No	97236	6	11
24.5	FB-7DB	Dark Bronze	Flip Lid	Duplex	No	97238	6	11
24.5	FB-7N	Nickel	Flip Lid	Duplex	No	97237	6	11
19.5	FB-8	Brass	Flip Lid	Duplex/LV	Yes	97239	6	11
19.5	FB-8DB	Dark Bronze	Flip Lid	Duplex/LV	Yes	97241	6	11
19.5	FB-8N	Nickel	Flip Lid	Duplex/LV	Yes	97240	6	11



## Specifications: Round



FB-3

FB-4

FB-7

FB-8

- Cut-in hole size: 4.0" Dia. (standard hole saw size)
- FB-3/FB-7 box size (no flange): 3.0" (Deep) x 3.936" dia.
- FB-4/FB-8 box size (no flange): 3.433" (Deep) x 3.936" dia.
- Flange outside dimension: FB-3/FB-7 (5.0" dia.), FB-4/FB-8 (5.25" dia.)
- Cover dimension (FB-3/): 5.25" dia. x 0.217" thickness
- Cover dimension (FB-4/FB-7/FB-8): 5.75" dia. x 0.237" thickness
- (2) Dust plate keystone openings (FB-4/FB-8): 0.575" x 0.765"
- Box wire capacity: FB-3/FB-7 (24.5 cu. in.), FB-4/FB-8 (19.5 cu. in.)
- FB-3/FB-7: (2) ½" knockouts on bottom
- FB-4/FB-8: (1) ½" knockout on bottom
- (4) molded-in Speed Klamps™ for securing NM cable
- Part material types:
  - Cover: brushed brass, nickel, or dark bronze
  - Screw plugs: matches cover with nitrile O-ring
  - Low Voltage Plates: (FB-4/FB-8) with closed-cell gaskets
  - Gasket: closed-cell rubber
  - Box screws and wings: galvanized steel
  - Dust plate: galvanized steel
  - Device: nonmetallic with copper terminals and brass ground
- Receptacle rating: 15 amp, 125V tamper resistant with ground (Article 406 of the NEC; requirements for Tamper Resistant receptacles in dwellings)
- Assembly meets UL 514C scrub-water exclusion test requirement

\*All dimensions are in inches.

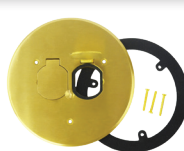
## Replacement Part Kits



FB-3NCVR



FB-4DBCVR



FB-7CVR



FB-8NCVR



FB-BRPLGLV

Catalog Number	Used With	Cover Finish	Cover Type	Device	LV Provision	UPC# 85339	Std. Pkg. Qty.	Std. Wt. (lb.)
FB-3CVR	FB-3, FB-7	Brass	Screw Plug	Duplex	No	94135	1	1
FB-3DBCVR	FB-3DB, FB-7DB	Dark Bronze	Screw Plug	Duplex	No	99604	1	1
FB-3NCVR	FB-3N, FB-7N	Nickel	Screw Plug	Duplex	No	94136	1	1
FB-4CVR	FB-4, FB-8	Brass	Screw Plug	Duplex/LV	Yes	99078	1	1
FB-4DBCVR	FB-4DB, FB-8DB	Dark Bronze	Screw Plug	Duplex/LV	Yes	99079	1	1
FB-4NCVR	FB-4N, FB-8N	Nickel	Screw Plug	Duplex/LV	Yes	99080	1	1
FB-7CVR	FB-7, FB-3	Brass	Flip Lid	Duplex	No	97245	1	1
FB-7DBCVR	FB-7DB, FB-3DB	Dark Bronze	Flip Lid	Duplex	No	97247	1	1
FB-7NCVR	FB-7N, FB-3N	Nickel	Flip Lid	Duplex	No	97246	1	1
FB-8CVR	FB-8, FB-4	Brass	Flip Lid	Duplex/LV	Yes	97248	1	1
FB-8DBCVR	FB-8DB, FB-4DB	Dark Bronze	Flip Lid	Duplex/LV	Yes	97250	1	1
FB-8NCVR	FB-8N, FB-4N	Nickel	Flip Lid	Duplex/LV	Yes	97249	1	1
FB-BRPLG	FB-3, FB-4	Brass	Screw Plug	Duplex/LV	FB-4	94137	1	1
FB-DBPLG	FB-3DB, FB-4DB	Dark Bronze	Screw Plug	Duplex/LV	FB-4DB	99605	1	1
FB-NPLG	FB-3N, FB-4N	Nickel	Screw Plug	Duplex/LV	FB-4N	94138	1	1
FB-BRPLGLV	FB-4, FB-8	Brass	Flip Lid	Duplex/LV	Yes	99084	1	1
FB-DBPLGLV	FB-4DB, FB-8DB	Dark Bronze	Flip Lid	Duplex/LV	Yes	99085	1	1
FB-NPLGLV	FB-4N, FB-8N	Nickel	Flip Lid	Duplex/LV	Yes	99086	1	1



**WARNING:** This product can expose you to chemicals including lead, which is known to the State of California to cause cancer and birth defects or other reproductive harm. For more information go to [www.P65Warnings.ca.gov](http://www.P65Warnings.ca.gov).

Adapter Kits for Industry Standard Concrete Junction Boxes

For use in adapting all residential round floor box assemblies to standard industry concrete junction boxes

Features & Benefits

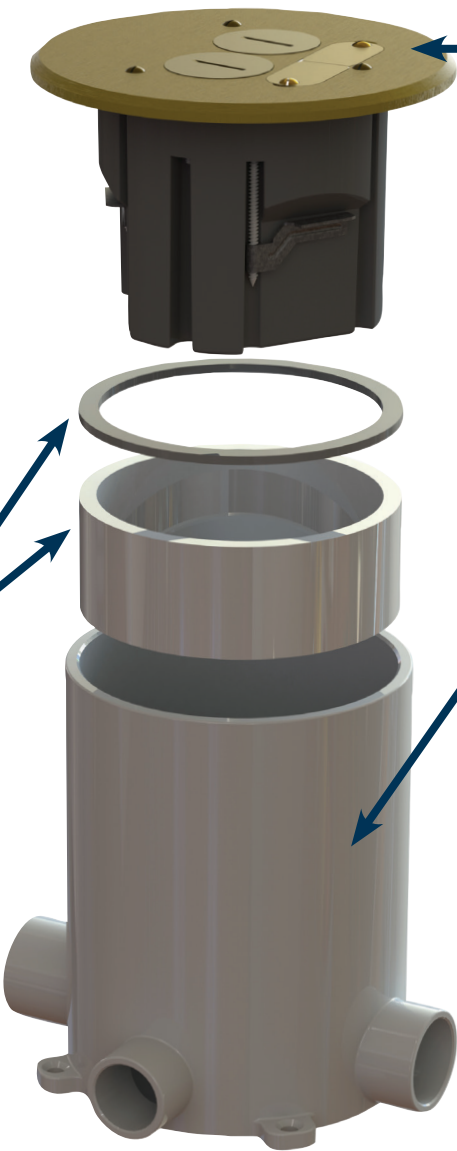
- Installed floor box assembly meets UL 514C scrub water exclusion test
- Quick and easy installation with fewer floor box and device components
- Floor box comes with a standard TR tamper resistant receptacle; 15 amp, 125 volt with ground (NEMA config. 5-15R)
- Allied Moulded floor box assemblies can be adapted to many standard PVC concrete junction boxes

FB-CAK  
Concrete Adapter Kit

- Includes:
- Adapter sealing gasket
  - Adapter ring
  - Detailed installation instructions



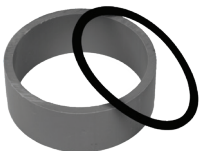
Scan QR code for more information.



- Allied Moulded Products, Inc.  
Floor Box Assemblies:
- FB-3 (All Models)
  - FB-4 (All Models)
  - FB-7 (All Models)
  - FB-8 (All Models)



- UL® recognized for use with Round PVC Concrete Junction Boxes with an inside diameter of 4-1/2" to 4-9/16". These include, but are not limited to the following:
- Arlington FLBC4500
  - Cantex, 5133758/5133760
  - Carlon, E971FB
  - Ipex/Sceptor, FB 076954
  - Kraloy, FB 078876
  - Lew, FB/FBLEW



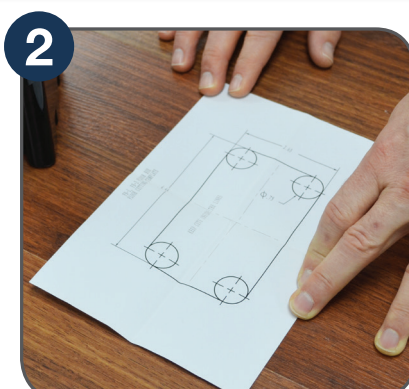
Catalog Number	Component Description	UPC# 85339	Std. Pkg. Qty.	Std. Wt. (lb.)
FB-CAK	Concrete Adapter Kit contains adapter sealing gasket, adapter ring, and detailed installation instructions	99479	6	3



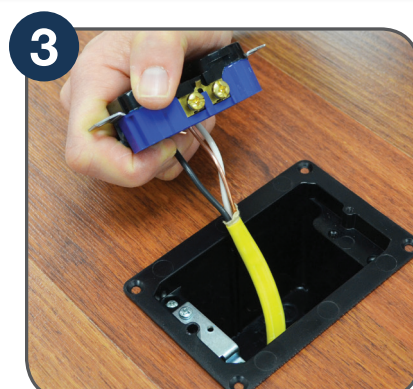
## Standard Floor Box Installation



Find a location in between floor joists and measure the box dimensions according to the template supplied in the installation instruction sheet.



Once measured, place the installation template on the floor and cut a hole accordingly. A small drill, jigsaw, or hole saw can be used to precisely cut the hole required.



Bring the electrical cable through the preferred box clamp, place the box down in the hole, and secure it with the preferred mounting method. Wire the device according to local electrical code.



Once the device has been wired, secure the device and dust plate down into the box using the screws supplied in the packaging.



Place the cover gasket on the box flange and position the cover assembly over the gasket to ensure an adequate seal between box and lid is met.



Secure the cover to the box with the screws supplied in the packaging. Attach all screw plugs and keystone plugs as required.

## SLIDERBOX® Floor Box Installation



Find a location and install floor box on the solid floor joist; mount with slider plate in the "up" position



Move floor box in highest position by loosening slider plate screws, install sub floor around raised box



Install desired floor material around the raised floor box. The raised box allows for easier installation by contractors



Adjust box height to achieve a flush position; wire the included device and install the gasket and cover



# The Contractor's Choice

Allied Moulded Products, Inc. (Allied Moulded) is the Contractor's Choice for nonmetallic electrical boxes in today's residential markets. Leveraging more than half-a-century of experience, Allied Moulded has grown to become the benchmark of quality within the electrical industry. Our full-service molding operation includes expertise in compression and injection molding, using thermoset and thermoplastic materials, and provides our customers with a superior product at a competitive price. Our unrelenting focus on service, delivery, value, innovation and technology in everything we make and do, has made us who we are today.

Allied Moulded offers a full range of electrical outlet box products and specialty products for residential construction. All products are designed with both the electrical professional and the do-it-yourself home owner in mind and have earned a reputation for strength and rigidity while remaining innovative.



[www.alliedmoulded.com](http://www.alliedmoulded.com)



**ALLIED  
MOULDED  
PRODUCTS, Inc.**

222 North Union Street  
Bryan, OH 43506

Phone: 1-800-722-2679  
Email: [sales@alliedmoulded.com](mailto:sales@alliedmoulded.com)

[www.alliedmoulded.com](http://www.alliedmoulded.com)

Follow us on social media!



**Available Through:**