



Molded-In Color Match Program

Molded-In Color Match Program for
Fiberglass & Polycarbonate Enclosures

AM, AM-R, AMU & AMP Series

Allied Moulded can color match any Pantone® color swatch for your application needs. Listed in the chart to the right are the minimum order quantities for the available enclosures based on raw material requirements.



| Part Number | Min. Qty | Part Number | Min. Qty |
|----------------|----------|--------------------|----------|
| AM743 | 650 | AM2068(R)..... | 80 |
| AM943..... | 600 | AM24208R..... | 75 |
| AM664(R)..... | 450 | AM24200R..... | 75 |
| AM864(R)..... | 350 | AM24248R..... | 75 |
| AM1084(R)..... | 275 | AM24240R..... | 75 |
| AM1086(R)..... | 225 | AM30248R..... | 75 |
| AM1206(R)..... | 175 | AM30240R..... | 75 |
| AM1224(R)..... | 175 | ULTRALINE® | |
| AM1226(R)..... | 175 | (AMU) Series | 500 |
| AM1426(R)..... | 150 | *POLYLINE® | |
| AM1648(R)..... | 100 | (AMP) Series | 500 |
| AM1868(R)..... | 80 | | |

**Polycarbonate material enclosures*

Additional Modifications

Allied Moulded continues to push the boundaries and has worked hard to be your source for fast, no-hassle modifications. With complete modification services, the need for inconvenient secondary handling of your enclosure is eliminated, saving you time and money. In addition to the Stocked Color Program, Allied Moulded offers a variety of additional modification services, including:

- Custom Holes & Cutouts
- Polycarbonate Viewing Windows
- EMI/RFI Shielding
- Silk Screen Printing
- Specialized Hardware
- Custom Panels

For more information on enclosure modifications, or to utilize our modification services on your enclosure project, call or email our customer service department today!



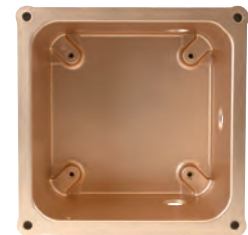
Custom Panels



Silk Screen Printing



Custom Holes & Cutouts



EMI/RFI Shielding